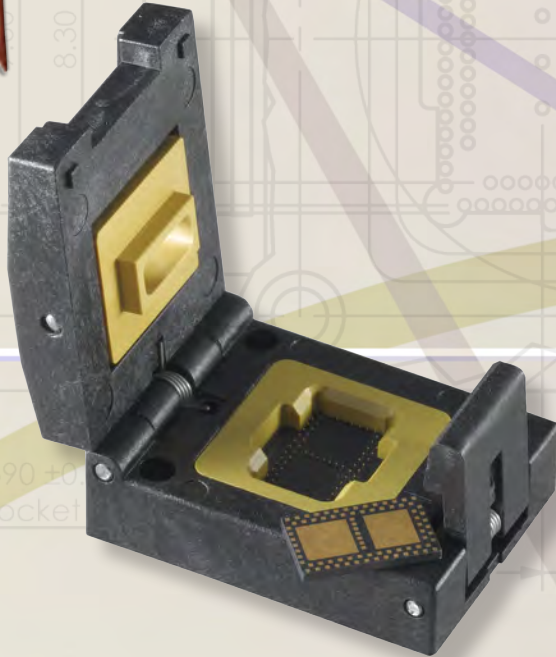




Quick Turn Semi Custom Sockets for 0.5mm Pitch Single and Dual Row QFN and DFN



- Ability to be adapted to any 0.5mm pitch QFN and DFN at no added cost.
- Ideal for all manual test applications, from engineering to burn-in.
- Small outline, modular design with individually replaceable, high performance spring probe contacts.
- With no NRE and exceedingly low pricing, this is the best value for your 0.5mm pitch testing.



Contact Specifications:

Contact Part#: CS2503Q7
Working Length: 3.3mm
Total Compliance: 0.6mm
Contact Force: 24g at working length
Current Rating: 1.5A Continuous
DC Resistance: <50mOHM
Self Inductance: 0.71nH
Bandwidth: at -1dB 13Gz



Contact Specifications:

Contact Part#: RCS-0.5LG
Working Length: 2.55mm
Total Compliance: 0.5mm
Contact Force: 30g at working length
Current Rating: 2.9A Continuous
DC Resistance: <35mOHM
Self Inductance: 0.88nH
Bandwidth: at -1dB 15.7Gz



CONTECH SOLUTIONS INC.

www.contechsolutions.com

MADE IN:
USA

MANUFACTURERS OF TEST &
RELIABILITY INTERFACE PRODUCTS

TYPE: QUICK TURN SEMI CUSTOM SOCKETS

631 MONTAGUE AVENUE, SAN LEANDRO, CA 94577
 TEL.: 510.357.7900 FAX: 510.357.7600