
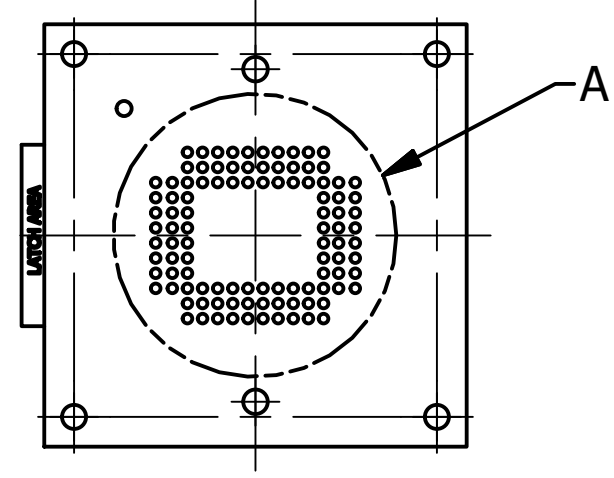
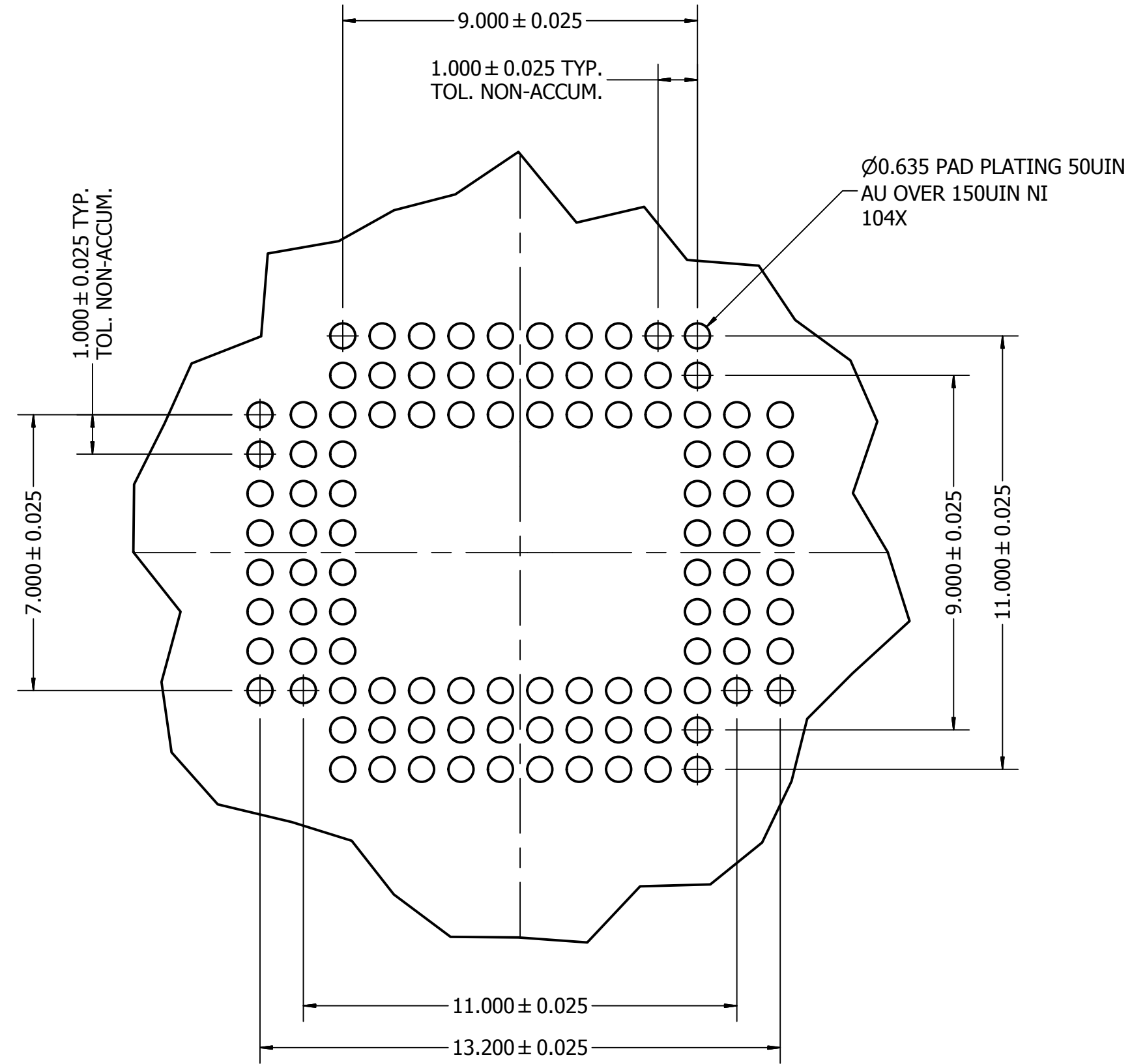


TOP VIEW


UNLESS OTHERWISE SPECIFIED DIMENSIONS ARE IN MILLIMETERS TOLERANCES DECIMALS .X ± .1 .XX ± .05 .XXX ± .030 ANGLES ±1'	DRAWN <b>J Portillo</b>	9/16/2013	 Contech Solutions Incorporated 631 Montague avenue San Leandro, Ca 94577	
	CHECKED	9/16/2013		
	QA		TITLE <b>CUSTOM SOCKET DRAWING</b> PN# CSLCC104-1.0-RCS-FA-IPS1	
	MFG			
	APPROVED			
MATERIAL		SIZE <b>C</b>	DWG NO CSLCC104_1.0_RCS_FA_IPS1	REV A
		SCALE	SHEET 1 OF 6	

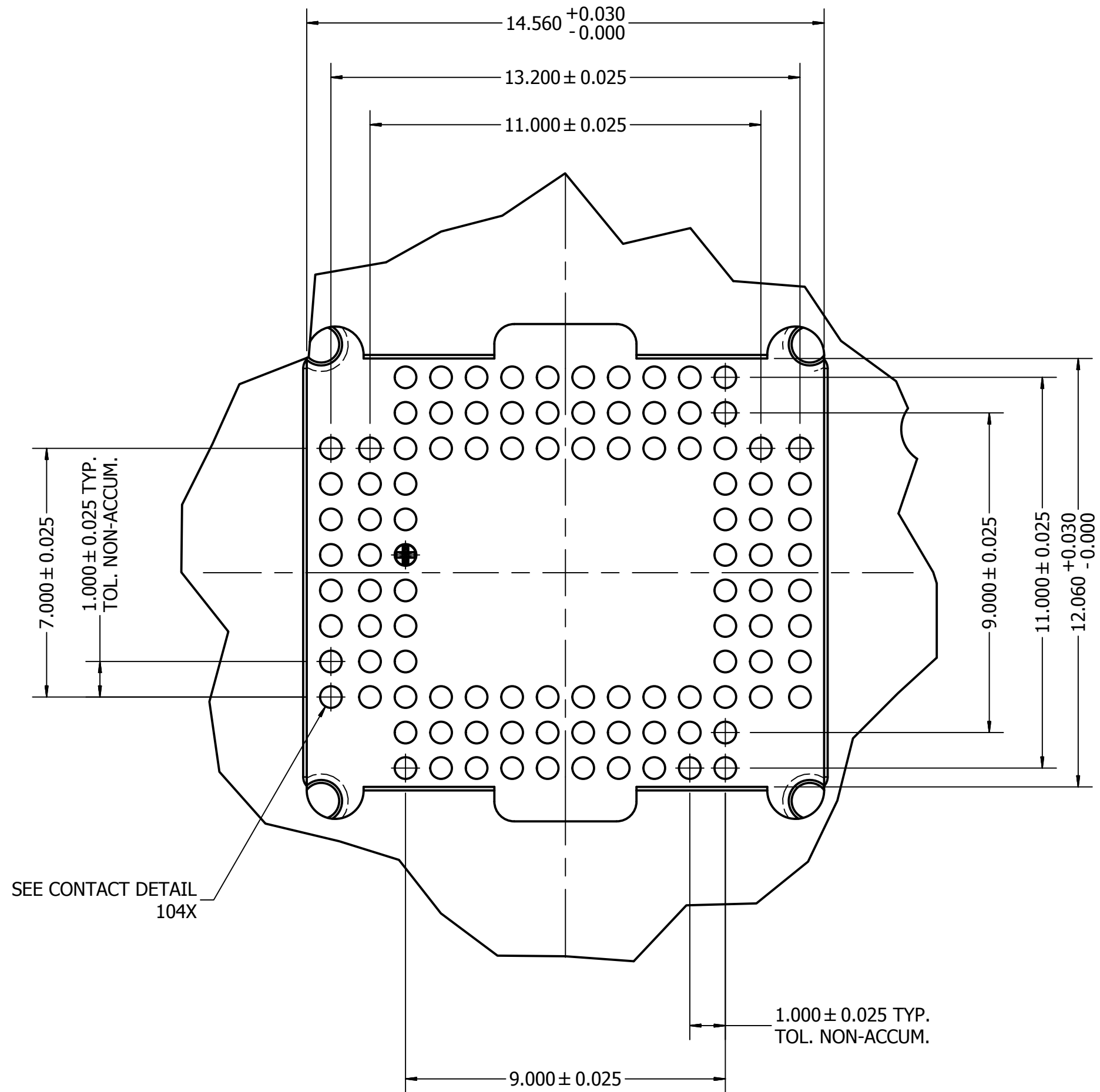
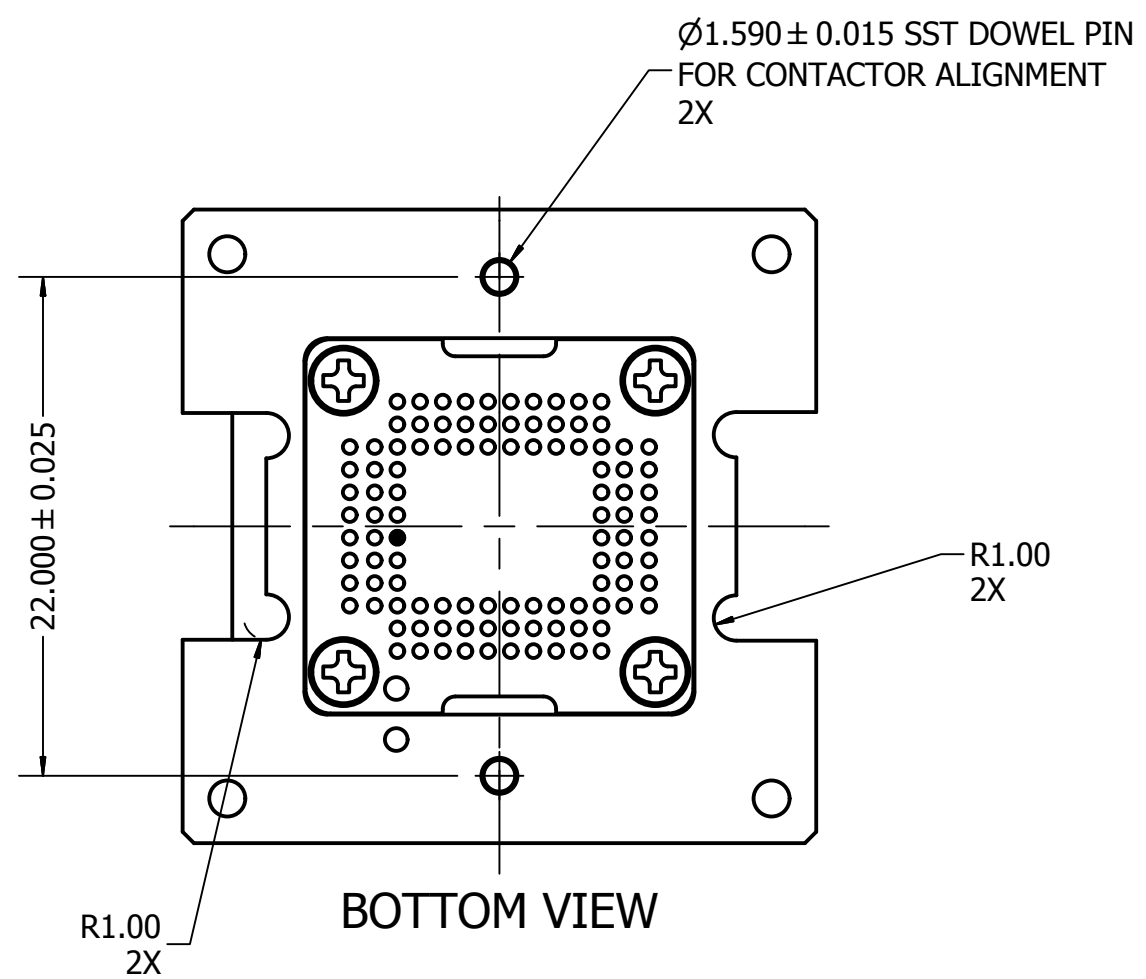
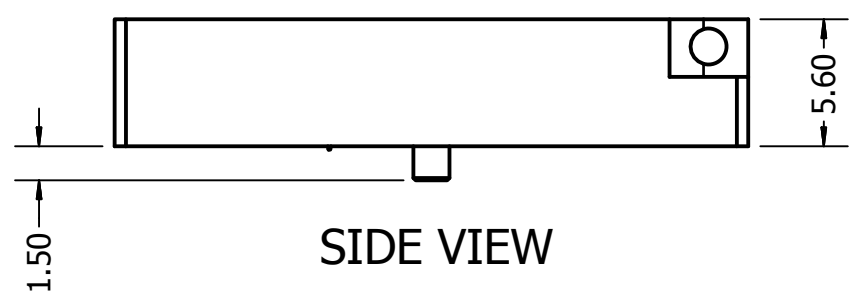
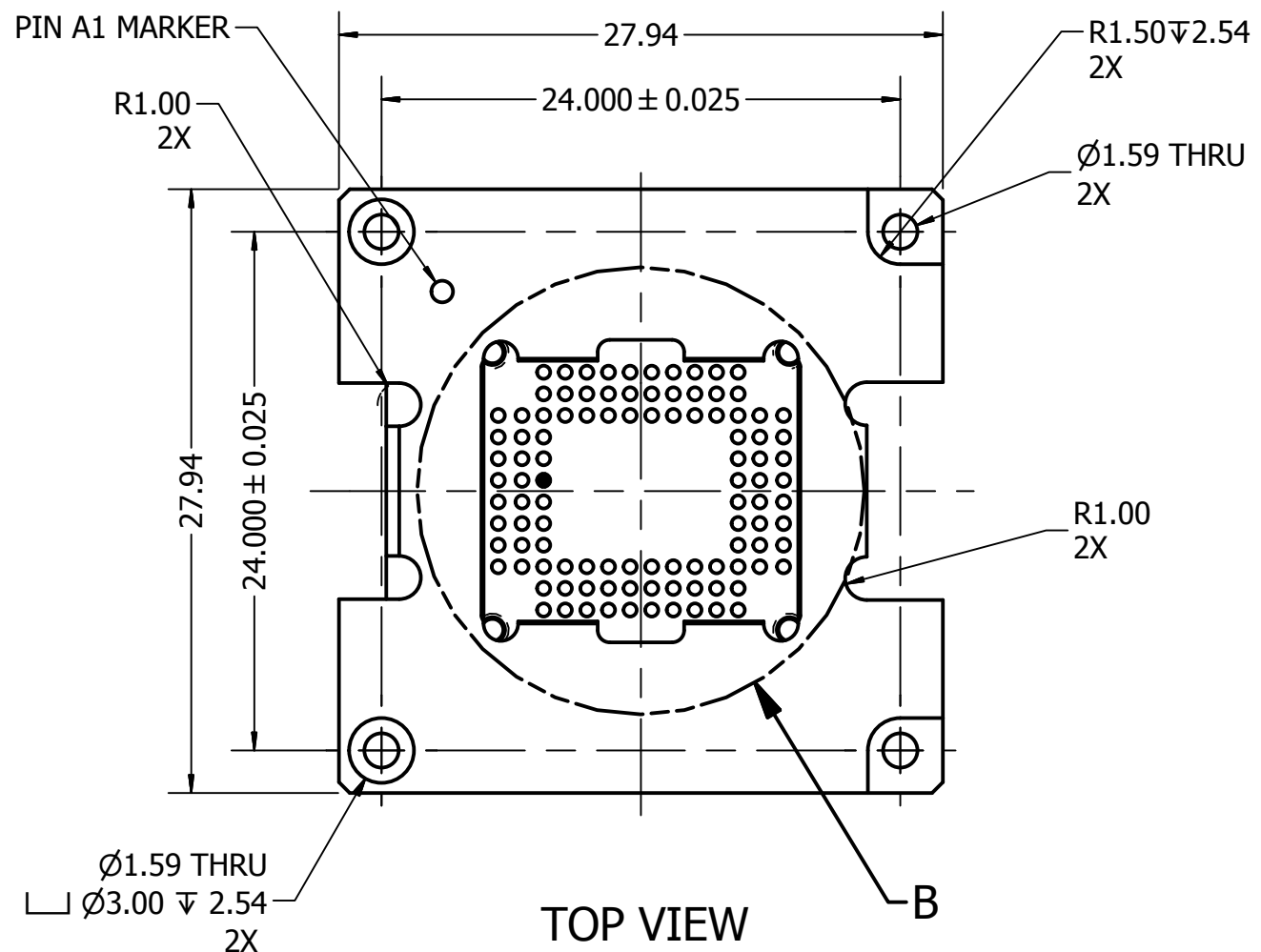



TOP VIEW

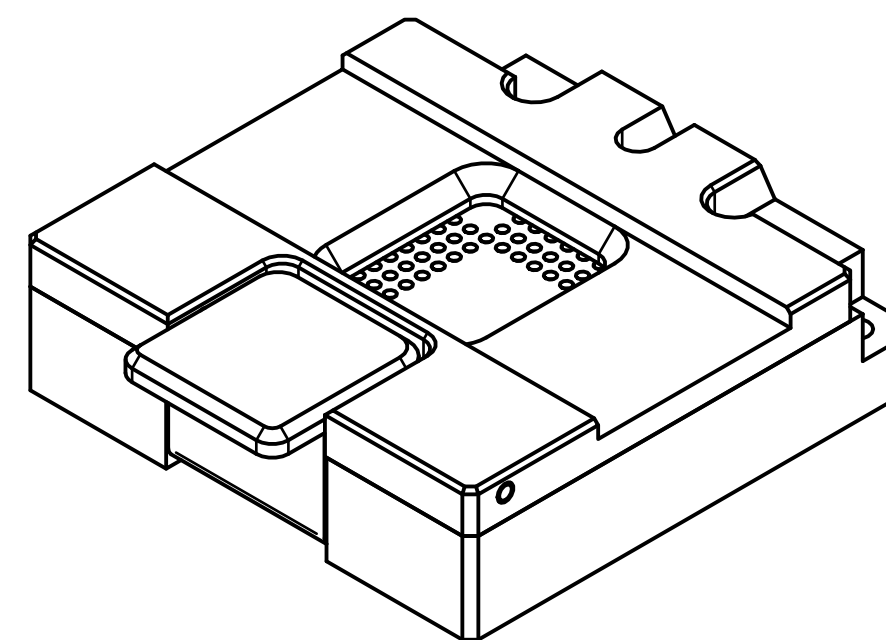
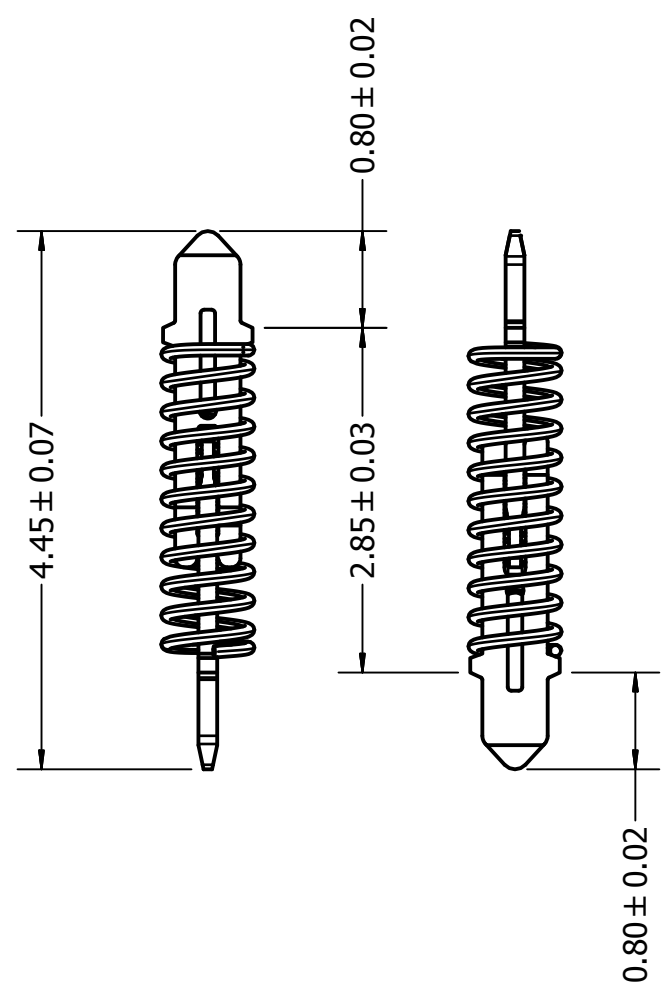
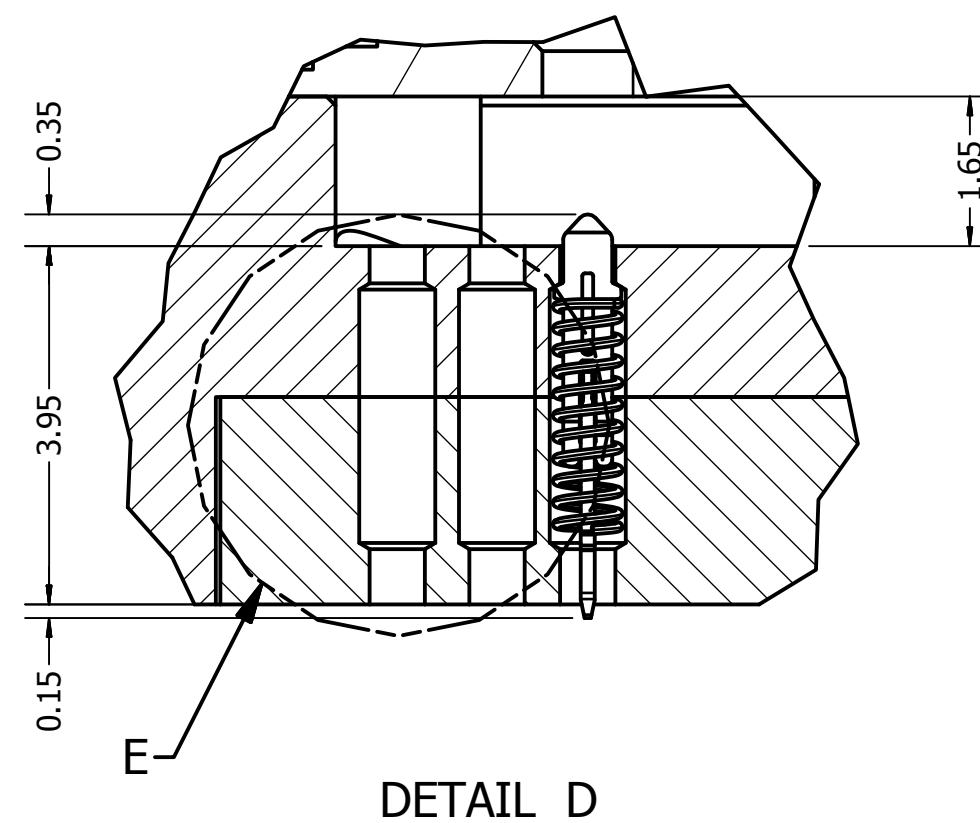
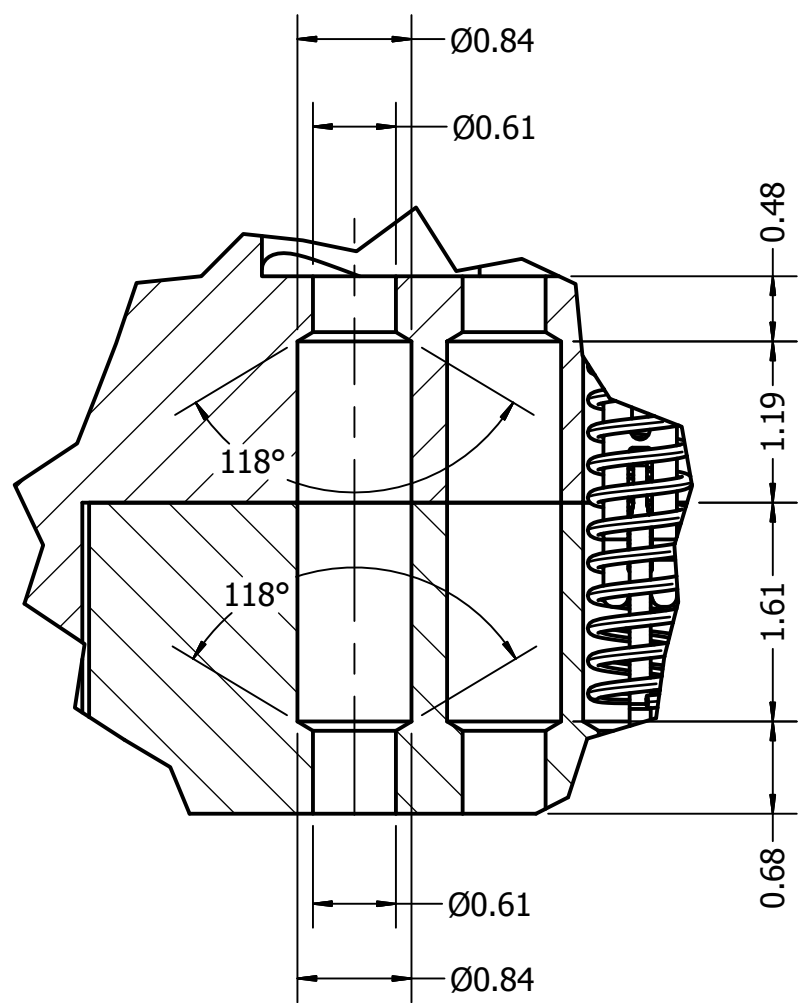
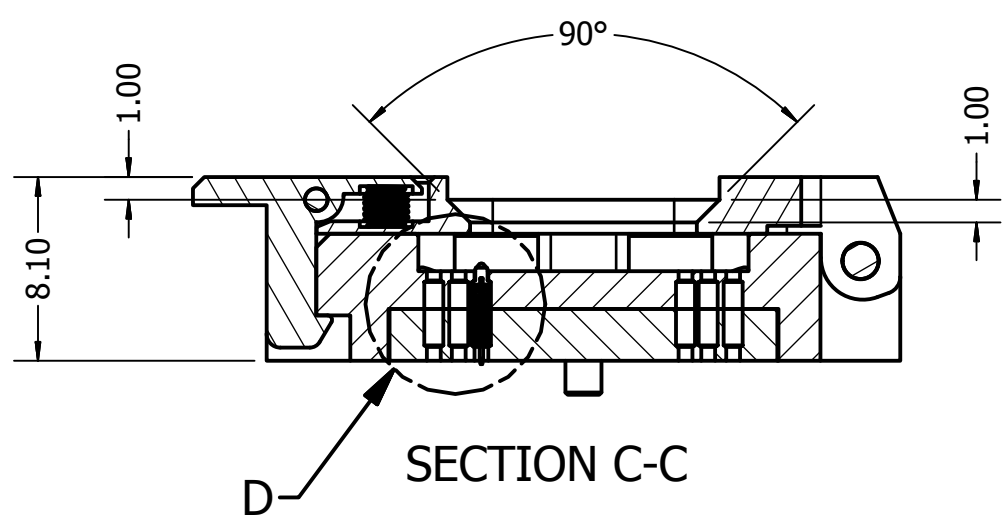
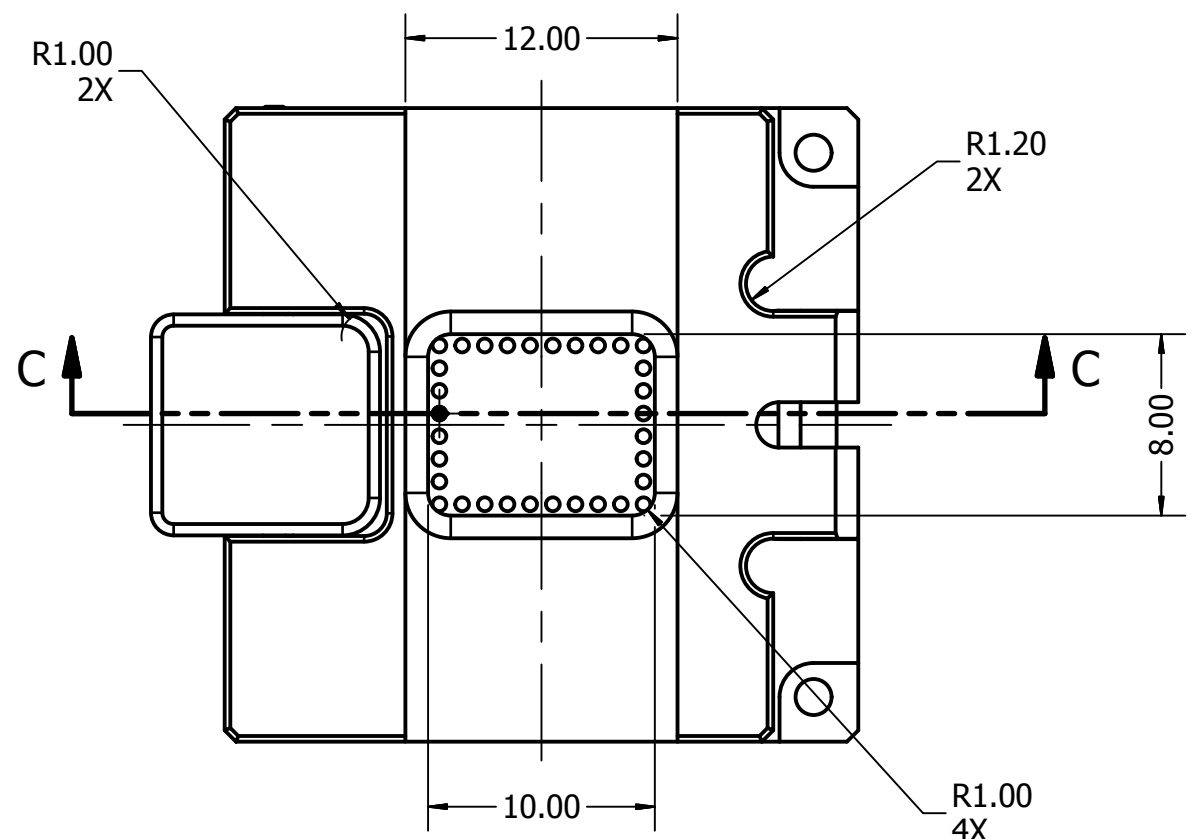



DETAIL A

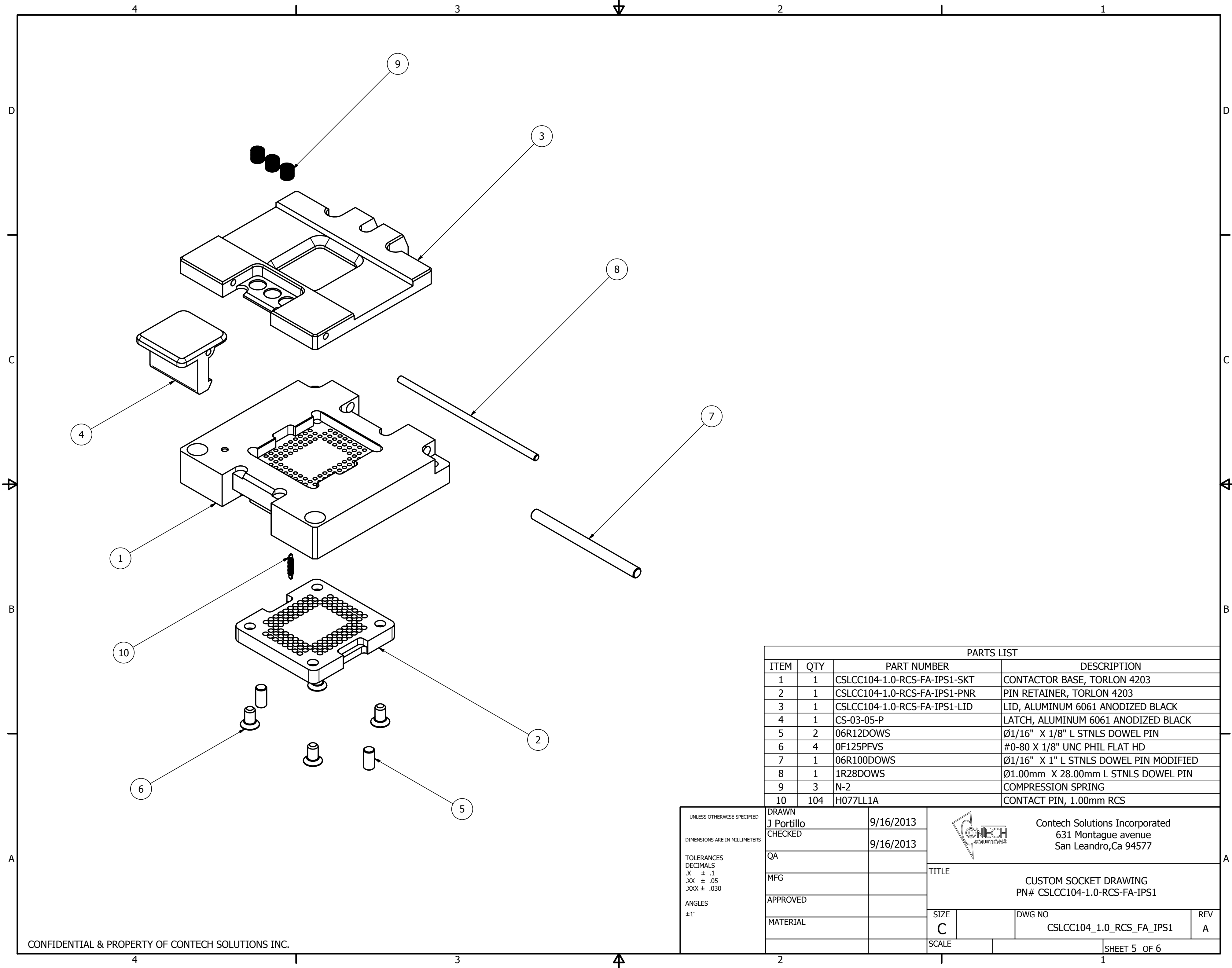
UNLESS OTHERWISE SPECIFIED DIMENSIONS ARE IN MILLIMETERS TOLERANCES DECIMALS .X ± .1 .XX ± .05 .XXX ± .030 ANGLES ±1'	DRAWN <b>J Portillo</b>	9/16/2013	 Contech Solutions Incorporated 631 Montague avenue San Leandro, Ca 94577	
	CHECKED	9/16/2013		
	QA		TITLE <b>CUSTOM SOCKET DRAWING</b> PN# CSLCC104-1.0-RCS-FA-IPS1	
	MFG			
	APPROVED			
MATERIAL		SIZE <b>C</b>	DWG NO CSLCC104_1.0_RCS_FA_IPS1	REV <b>A</b>
		SCALE	SHEET 2 OF 6	




UNLESS OTHERWISE SPECIFIED DIMENSIONS ARE IN MILLIMETERS TOLERANCES DECIMALS .X ± .1 .XX ± .05 .XXX ± .030 ANGLES ±1'	DRAWN J Portillo	9/16/2013	 Contech Solutions Incorporated 631 Montague avenue San Leandro, Ca 94577
	CHECKED	9/16/2013	
	QA		TITLE
	MFG		CUSTOM SOCKET DRAWING PN# CSLCC104-1.0-RCS-FA-IPS1
APPROVED		SIZE C	DWG NO CSLCC104_1.0_RCS_FA_IPS1
MATERIAL		SCALE	REV A
			SHEET 3 OF 6

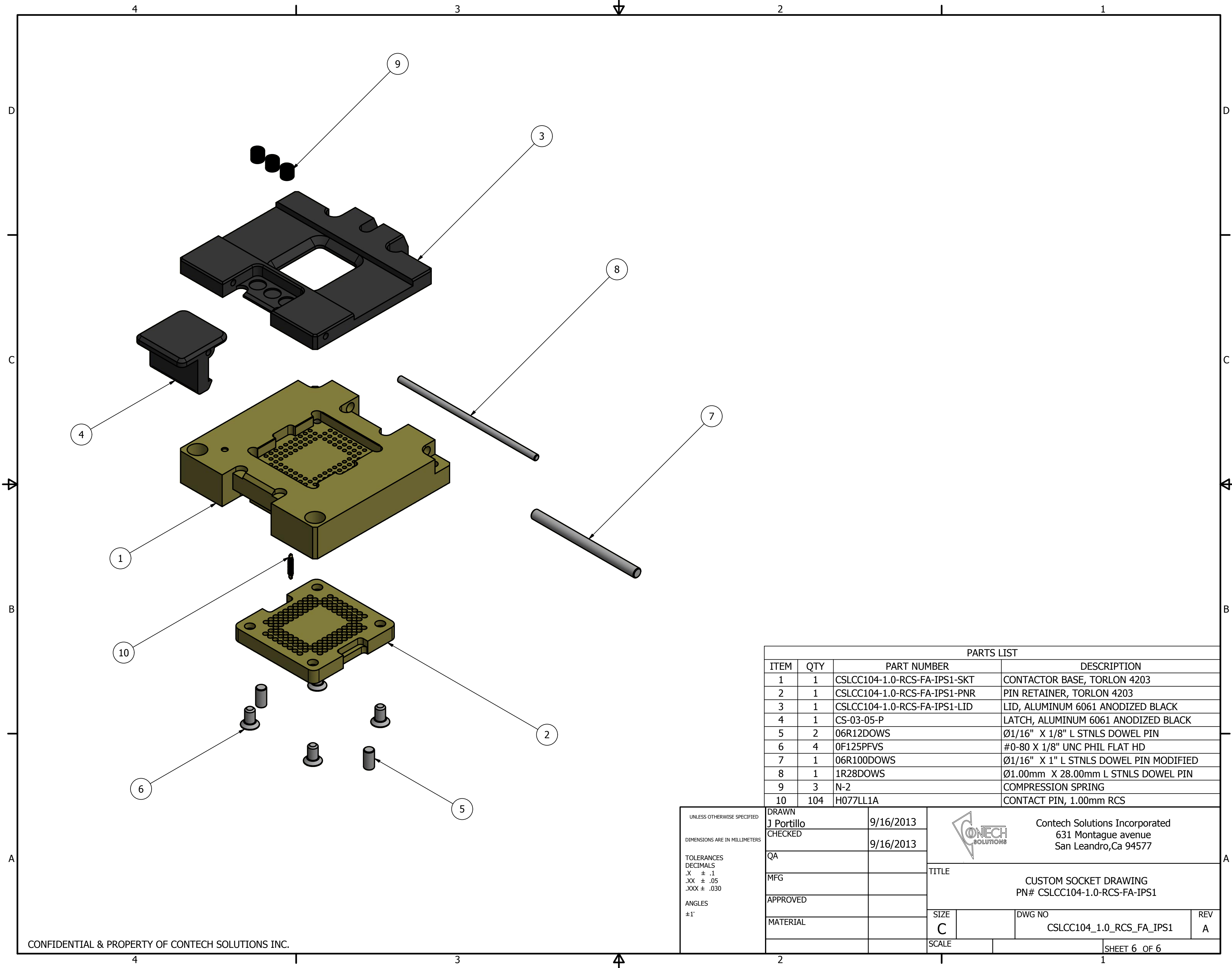


UNLESS OTHERWISE SPECIFIED DIMENSIONS ARE IN MILLIMETERS	DRAWN J Portillo	9/16/2013	 Contech Solutions Incorporated 631 Montague avenue San Leandro, Ca 94577
	CHECKED	9/16/2013	
TOLERANCES DECIMALS .X ± .1 .XX ± .05 .XXX ± .030  ANGLES ±1°	QA		TITLE
	MFG		CUSTOM SOCKET DRAWING PN# CSLCC104-1.0-RCS-FA-IPS1
	APPROVED		SIZE C
	MATERIAL		DWG NO CSLCC104_1.0_RCS_FA_IPS1
			REV A
			SCALE
			SHEET 4 OF 6




PARTS LIST			
ITEM	QTY	PART NUMBER	DESCRIPTION
1	1	CSLCC104-1.0-RCS-FA-IPS1-SKT	CONTACTOR BASE, TORLON 4203
2	1	CSLCC104-1.0-RCS-FA-IPS1-PNR	PIN RETAINER, TORLON 4203
3	1	CSLCC104-1.0-RCS-FA-IPS1-LID	LID, ALUMINUM 6061 ANODIZED BLACK
4	1	CS-03-05-P	LATCH, ALUMINUM 6061 ANODIZED BLACK
5	2	06R12DOWS	Ø1/16" X 1/8" L STNLS DOWEL PIN
6	4	0F125PFVS	#0-80 X 1/8" UNC PHIL FLAT HD
7	1	06R100DOWS	Ø1/16" X 1" L STNLS DOWEL PIN MODIFIED
8	1	1R28DOWS	Ø1.00mm X 28.00mm L STNLS DOWEL PIN
9	3	N-2	COMPRESSION SPRING
10	104	H077LL1A	CONTACT PIN, 1.00mm RCS

UNLESS OTHERWISE SPECIFIED DIMENSIONS ARE IN MILLIMETERS  TOLERANCES DECIMALS .X ± .1 .XX ± .05 .XXX ± .030  ANGLES ±1°	DRAWN	J Portillo	9/16/2013	 Contech Solutions Incorporated 631 Montague avenue San Leandro, Ca 94577					
	CHECKED		9/16/2013						
	QA				TITLE	CUSTOM SOCKET DRAWING PN# CSLCC104-1.0-RCS-FA-IPS1			
	MFG				SIZE	C	DWG NO	CSLCC104_1.0_RCS_FA_IPS1	REV
APPROVED				SCALE					
MATERIAL									



PARTS LIST			
ITEM	QTY	PART NUMBER	DESCRIPTION
1	1	CSLCC104-1.0-RCS-FA-IPS1-SKT	CONTACTOR BASE, TORLON 4203
2	1	CSLCC104-1.0-RCS-FA-IPS1-PNR	PIN RETAINER, TORLON 4203
3	1	CSLCC104-1.0-RCS-FA-IPS1-LID	LID, ALUMINUM 6061 ANODIZED BLACK
4	1	CS-03-05-P	LATCH, ALUMINUM 6061 ANODIZED BLACK
5	2	06R12DOWS	Ø1/16" X 1/8" L STNLS DOWEL PIN
6	4	0F125PFVS	#0-80 X 1/8" UNC PHIL FLAT HD
7	1	06R100DOWS	Ø1/16" X 1" L STNLS DOWEL PIN MODIFIED
8	1	1R28DOWS	Ø1.00mm X 28.00mm L STNLS DOWEL PIN
9	3	N-2	COMPRESSION SPRING
10	104	H077LL1A	CONTACT PIN, 1.00mm RCS

UNLESS OTHERWISE SPECIFIED DIMENSIONS ARE IN MILLIMETERS  TOLERANCES DECIMALS .X ± .1 .XX ± .05 .XXX ± .030  ANGLES ±1°	DRAWN	J Portillo	9/16/2013	 Contech Solutions Incorporated 631 Montague avenue San Leandro, Ca 94577		
	CHECKED		9/16/2013			
	QA			TITLE	CUSTOM SOCKET DRAWING PN# CSLCC104-1.0-RCS-FA-IPS1	
	MFG			SIZE		C
	APPROVED			DWG NO		CSLCC104_1.0_RCS_FA_IPS1
MATERIAL			SCALE		SHEET 6 OF 6	