

Ø2.37 THRU HOLE
FOR CONTACTOR MOUNTING
3lbs/in TORQUE NEEDED ON EACH SCREW
4X

4.000 ± 0.025
0.500 ± 0.025 TYP.
TOL. NON-ACCUM.

Ø0.35 PAD PLATING 50uIN
Au OVER 150uIN Ni
162X

0.500 ± 0.025 TYP.
TOL. NON-ACCUM.

NO COMPONENTS OR
SOLDER MASK IN THIS AREA


Ø1.620 ^{+0.025}
_{-0.000} THRU
FOR CONTACTOR ALIGNMENT 2X

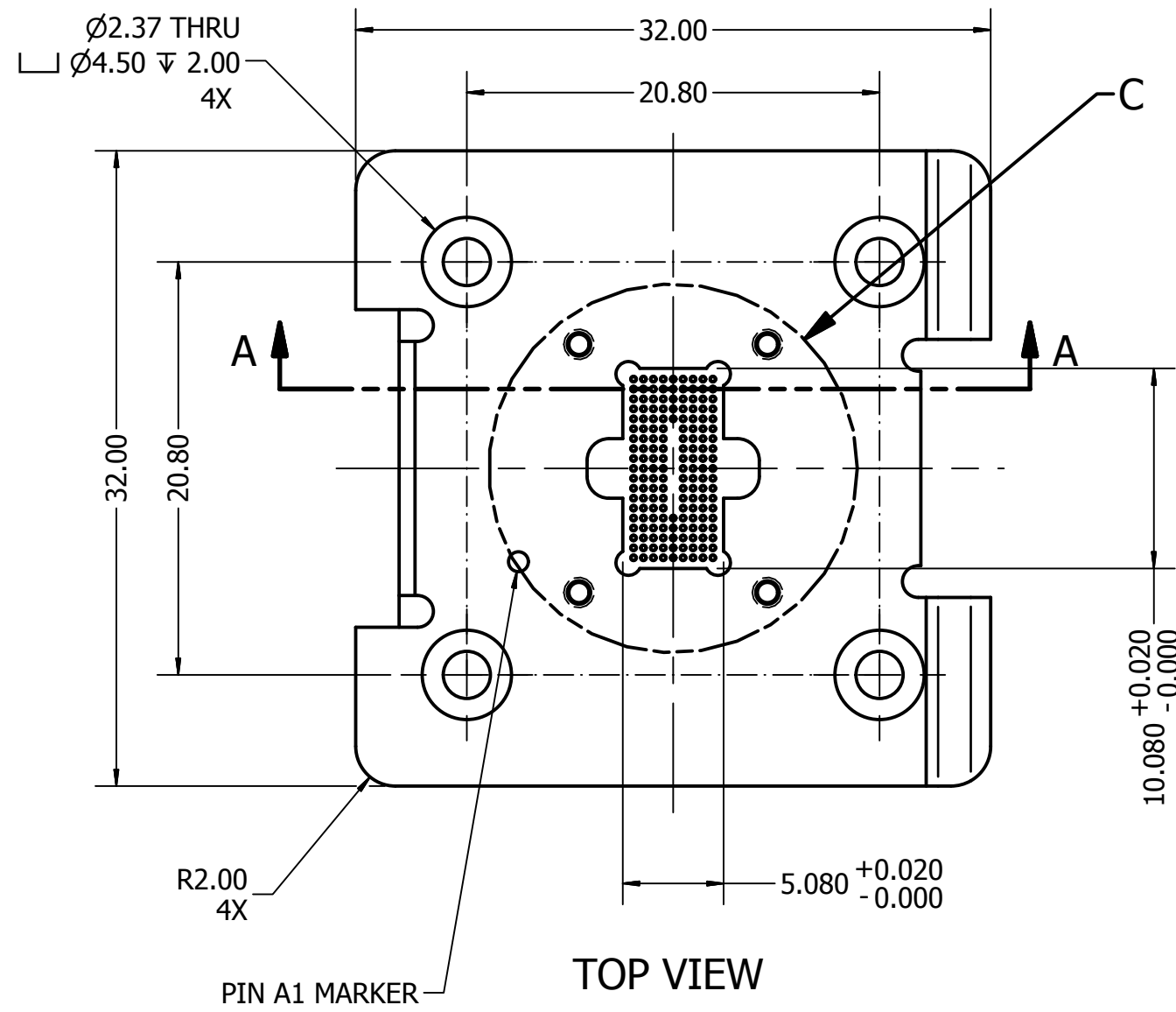
PIN A1 MARKER

LATCH AREA

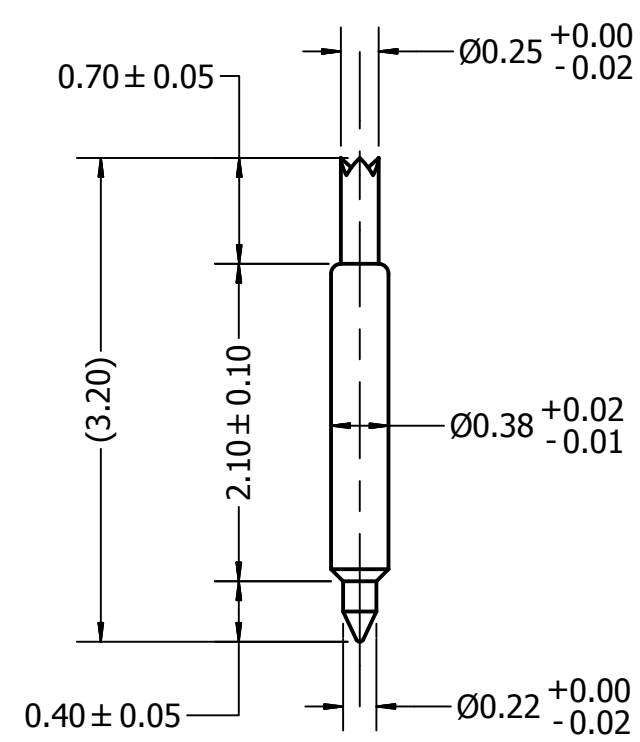
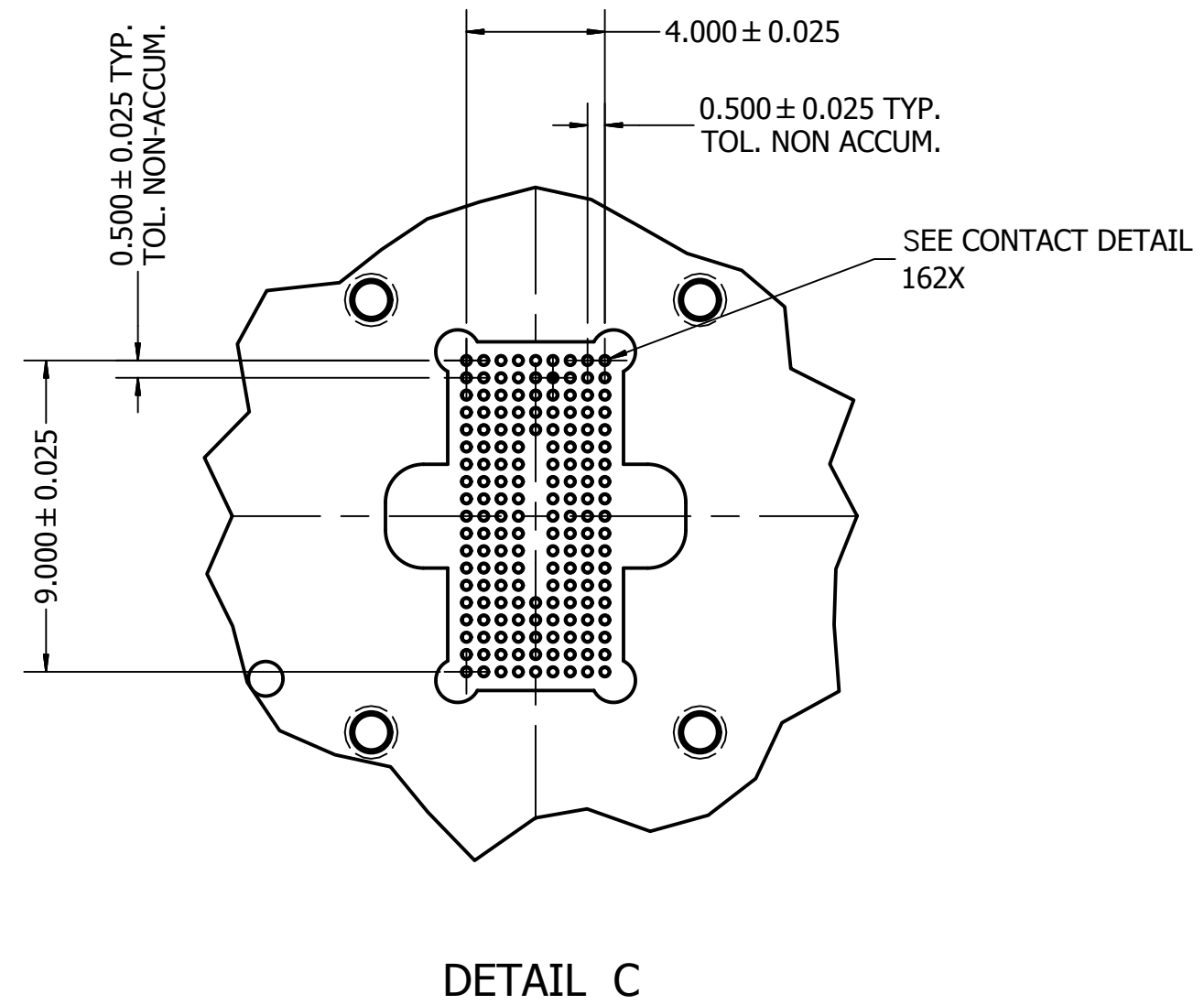
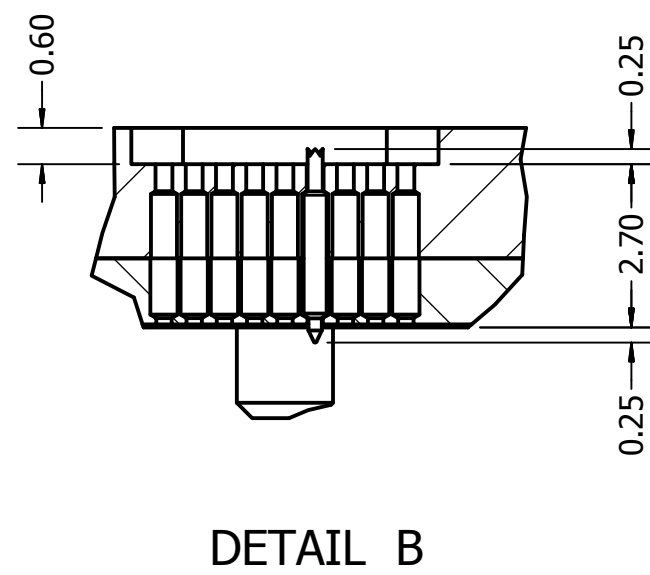
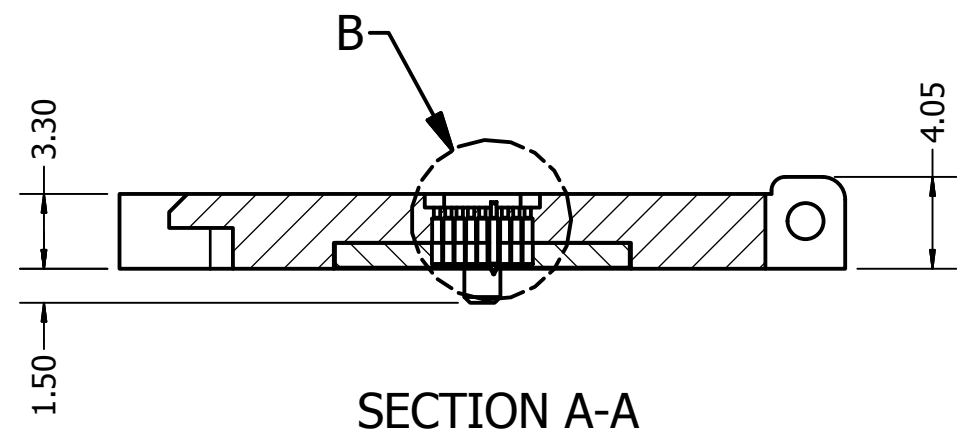
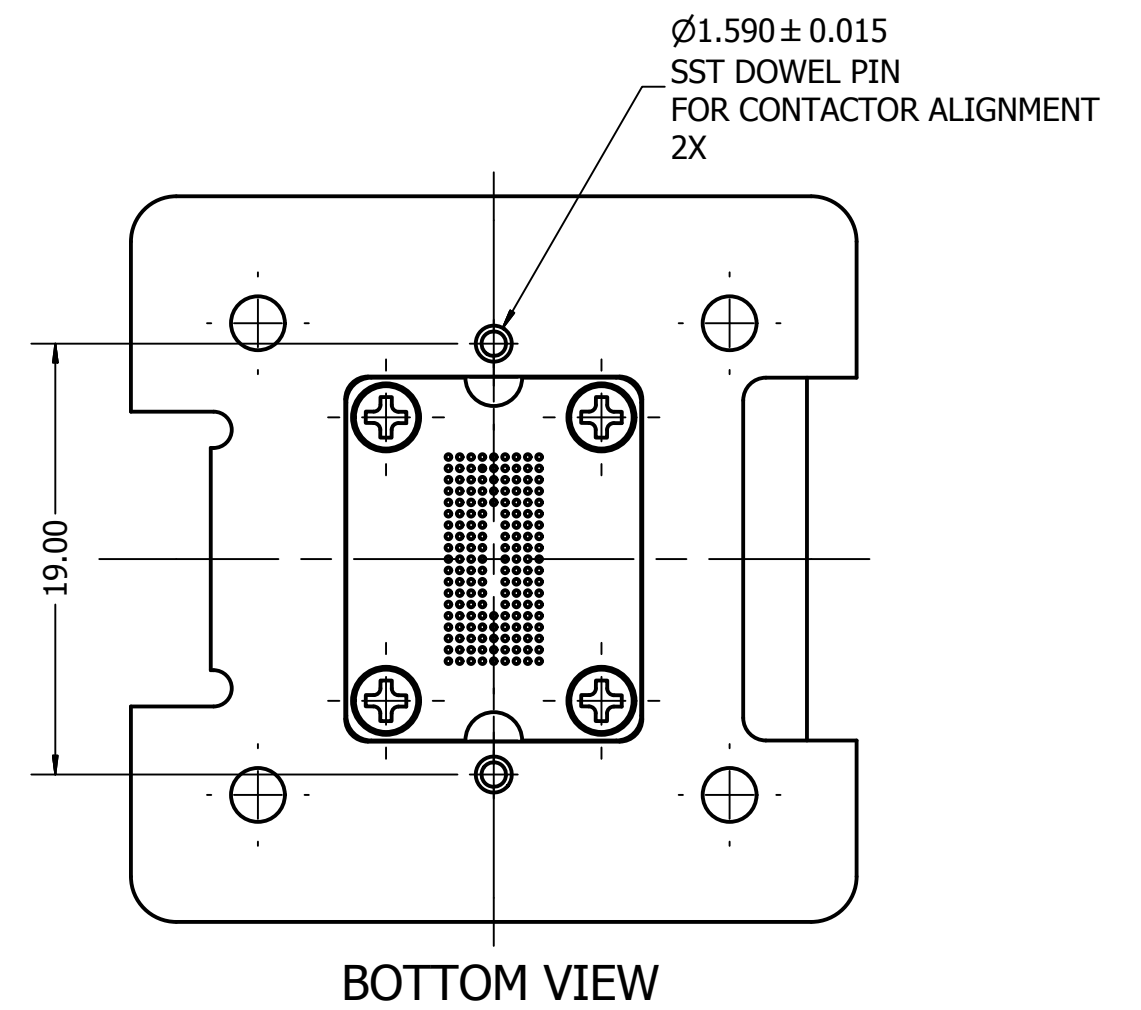
HINGE AREA

TOP VIEW

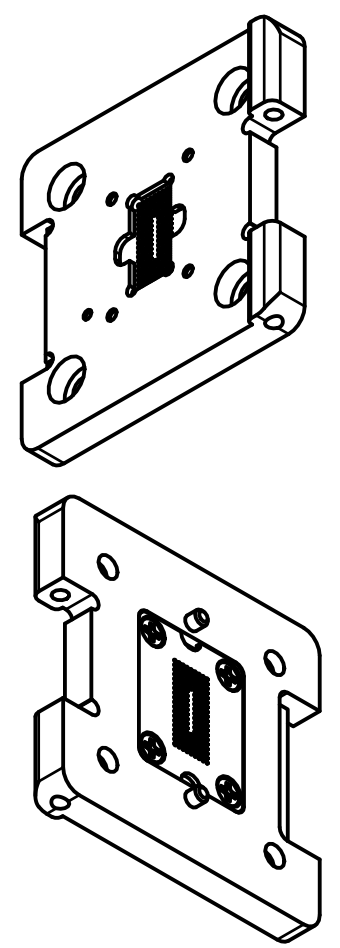
UNLESS OTHERWISE SPECIFIED DIMENSIONS ARE IN MILLIMETERS TOLERANCES DECIMALS .X ± .1 .XX ± .05 .XXX ± .030 ANGLES ±1°	DRAWN J Portillo	3/19/2014	 Contech Solutions Incorporated 631 Montague avenue San Leandro, Ca 94577
	CHECKED	3/28/2014	
	QA		TITLE
	MFG		DRAWING FOR CUSTOM SOCKET PN# CSCSP162-0.5-KG1050-FA-ATML1
APPROVED		SIZE C	DWG NO CSCSP162_0.5_KG1050_FA_ATML1
MATERIAL		SCALE	REV A2
			SHEET 1 OF 6




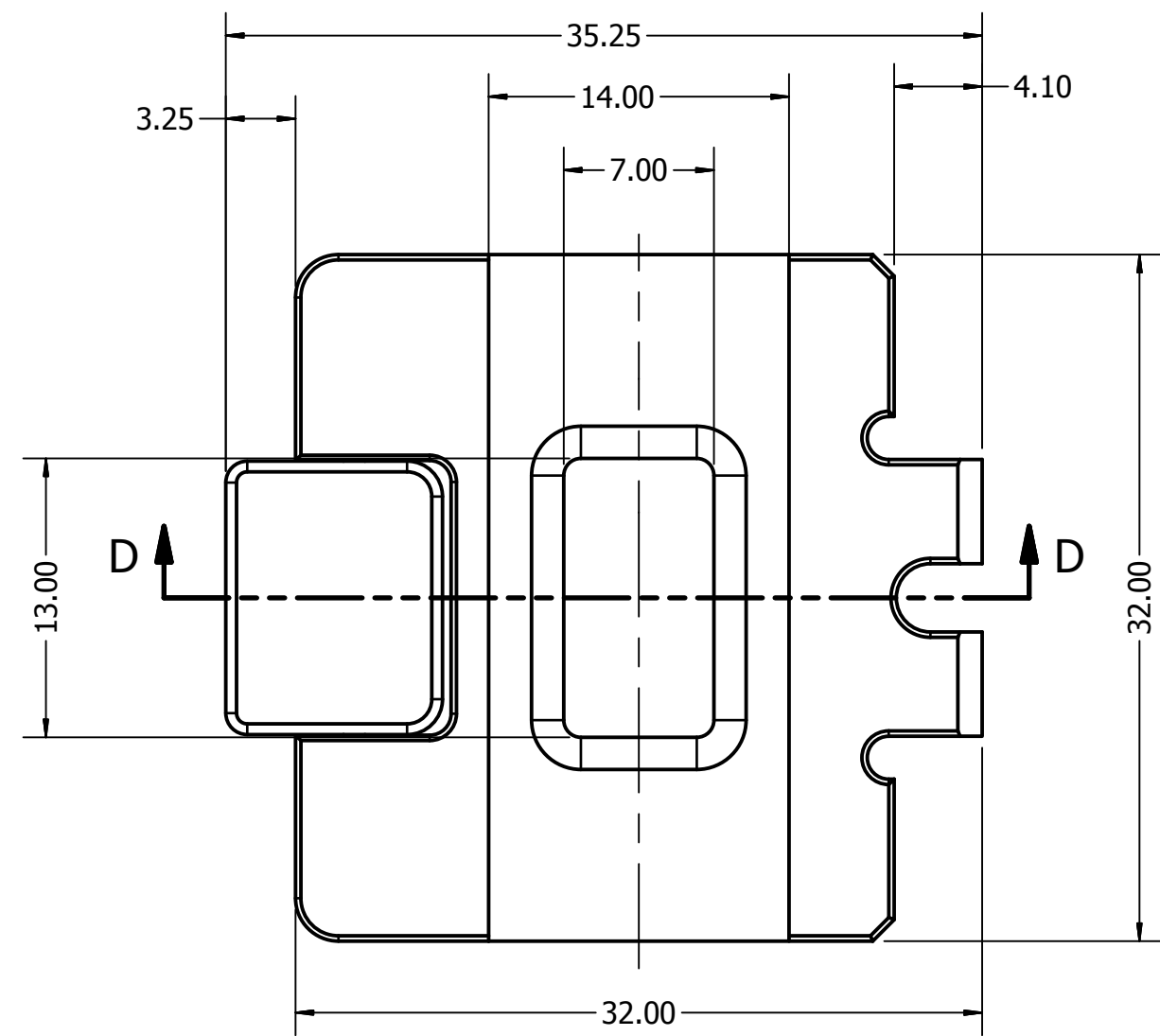
SIDE VIEW



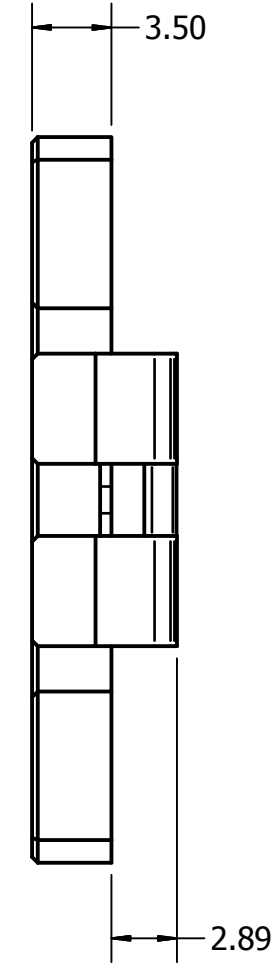
PIN DETAIL
KG1-050H-AR-1



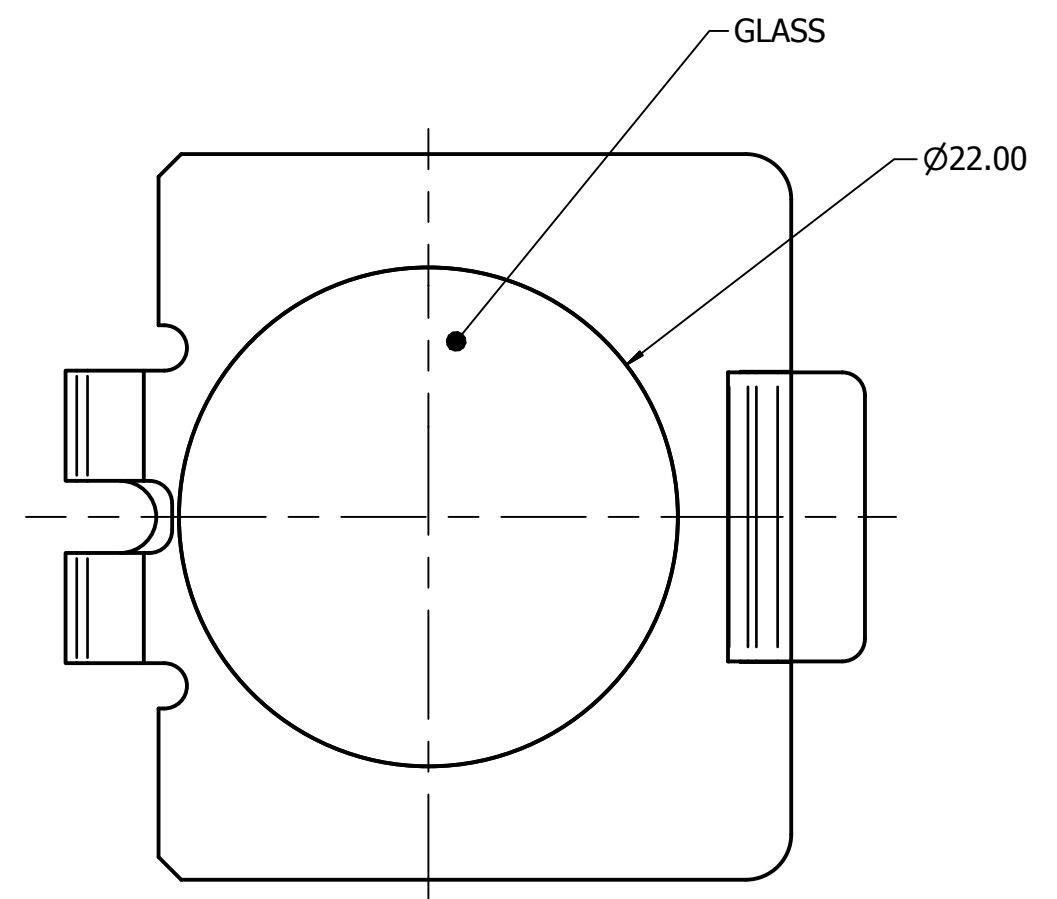
UNLESS OTHERWISE SPECIFIED DIMENSIONS ARE IN MILLIMETERS	DRAWN J Portillo	3/19/2014	 Contech Solutions Incorporated 631 Montague avenue San Leandro, Ca 94577
	CHECKED	3/28/2014	
TOLERANCES DECIMALS .X \pm .1 .XX \pm .05 .XXX \pm .030 ANGLES $\pm 1^\circ$	QA		TITLE
	MFG		DRAWING FOR CUSTOM SOCKET PN# CSCSP162-0.5-KG1050-FA-ATML1
	APPROVED		SIZE C
	MATERIAL TORLON 4203		DWG NO CSCSP162_0.5_KG1050_FA_ATML1
			REV A2
			SCALE
			SHEET 2 OF 6



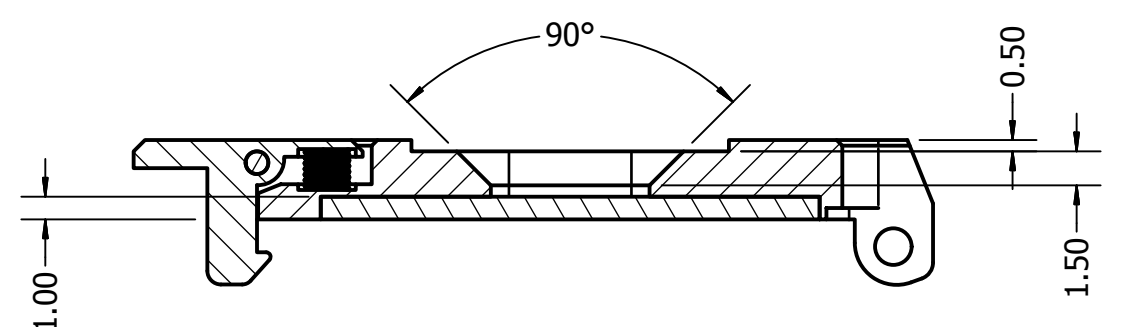
TOP VIEW



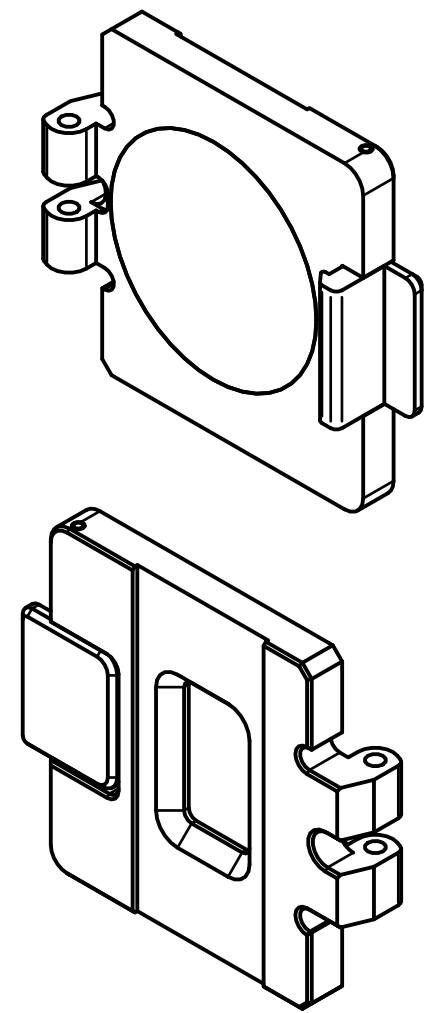
SIDE VIEW




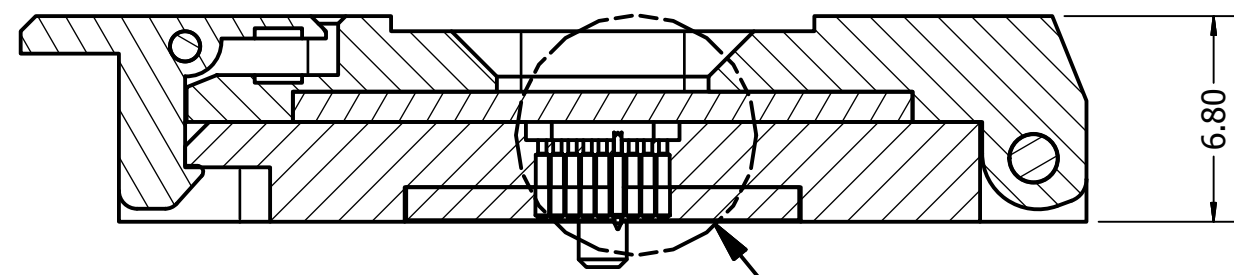
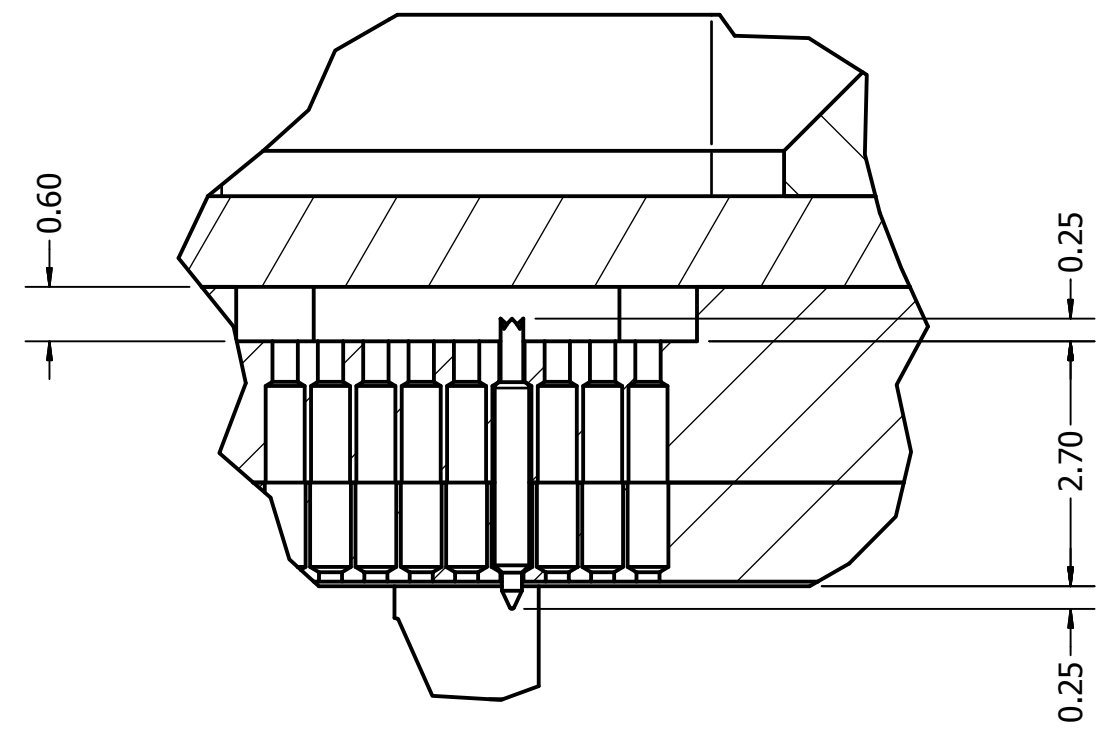
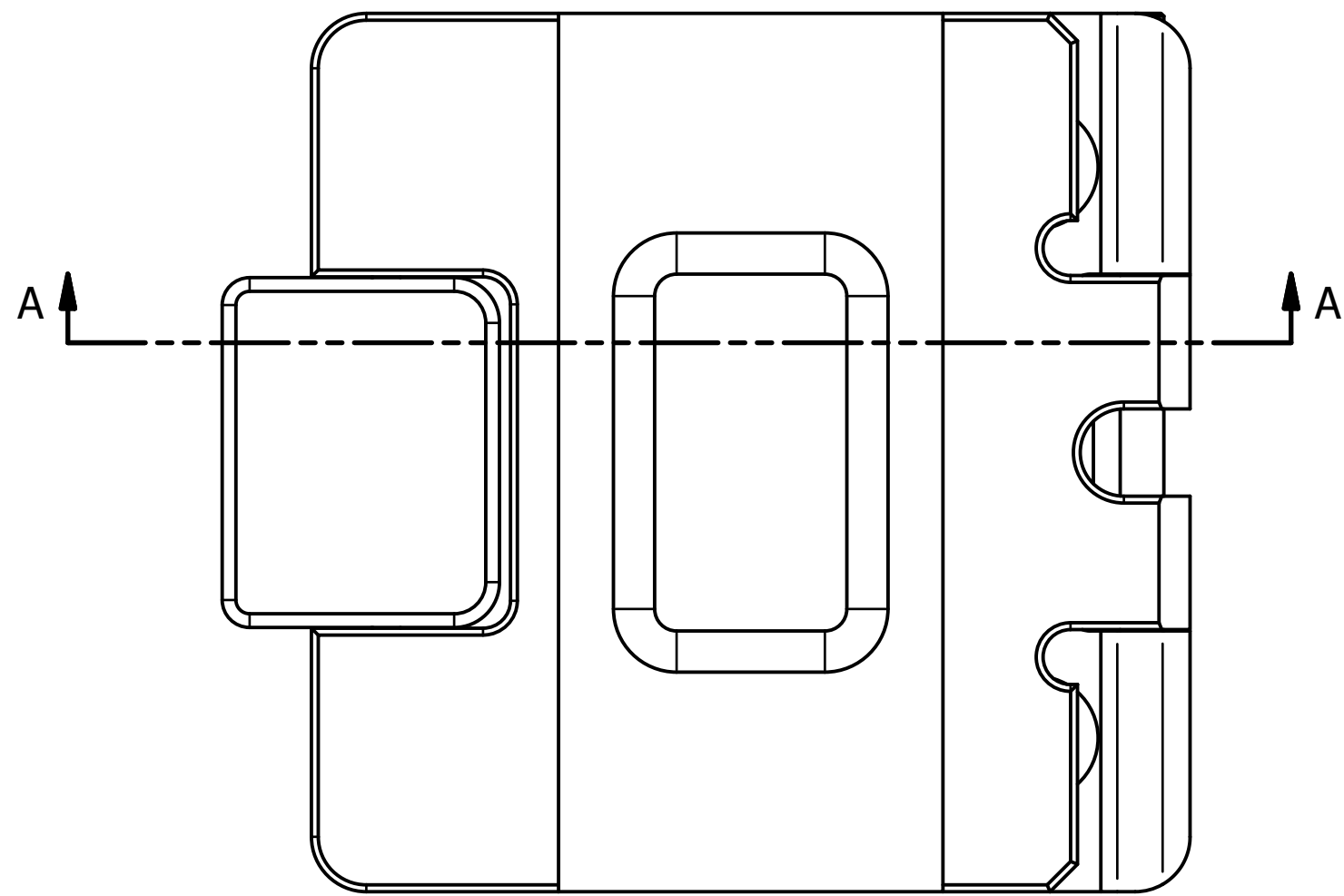
BOTTOM VIEW



SECTION D-D




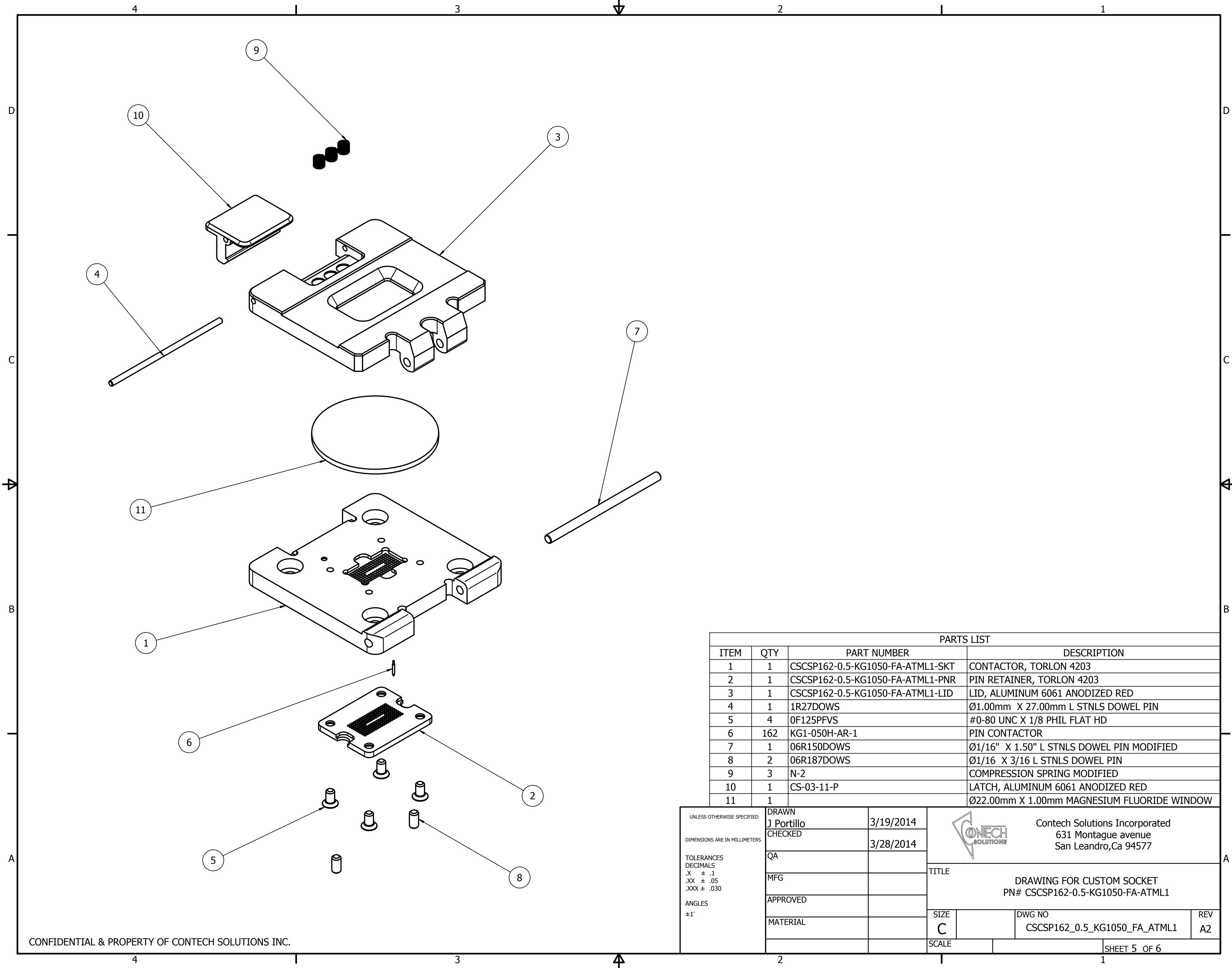
UNLESS OTHERWISE SPECIFIED DIMENSIONS ARE IN MILLIMETERS TOLERANCES DECIMALS .X ± .1 .XX ± .05 .XXX ± .030 ANGLES ±1°	DRAWN J Portillo	3/19/2014	 Contech Solutions Incorporated 631 Montague avenue San Leandro, Ca 94577
	CHECKED	3/28/2014	
	QA		TITLE
	MFG		DRAWING FOR CUSTOM SOCKET PN# CSCSP162-0.5-KG1050-FA-ATML1
	APPROVED		SIZE C
MATERIAL ALUMINUM 6061		DWG NO CSCSP162_0.5_KG1050_FA_ATML1	REV A2
		SCALE	SHEET 3 OF 6




SECTION A-A

DETAIL B

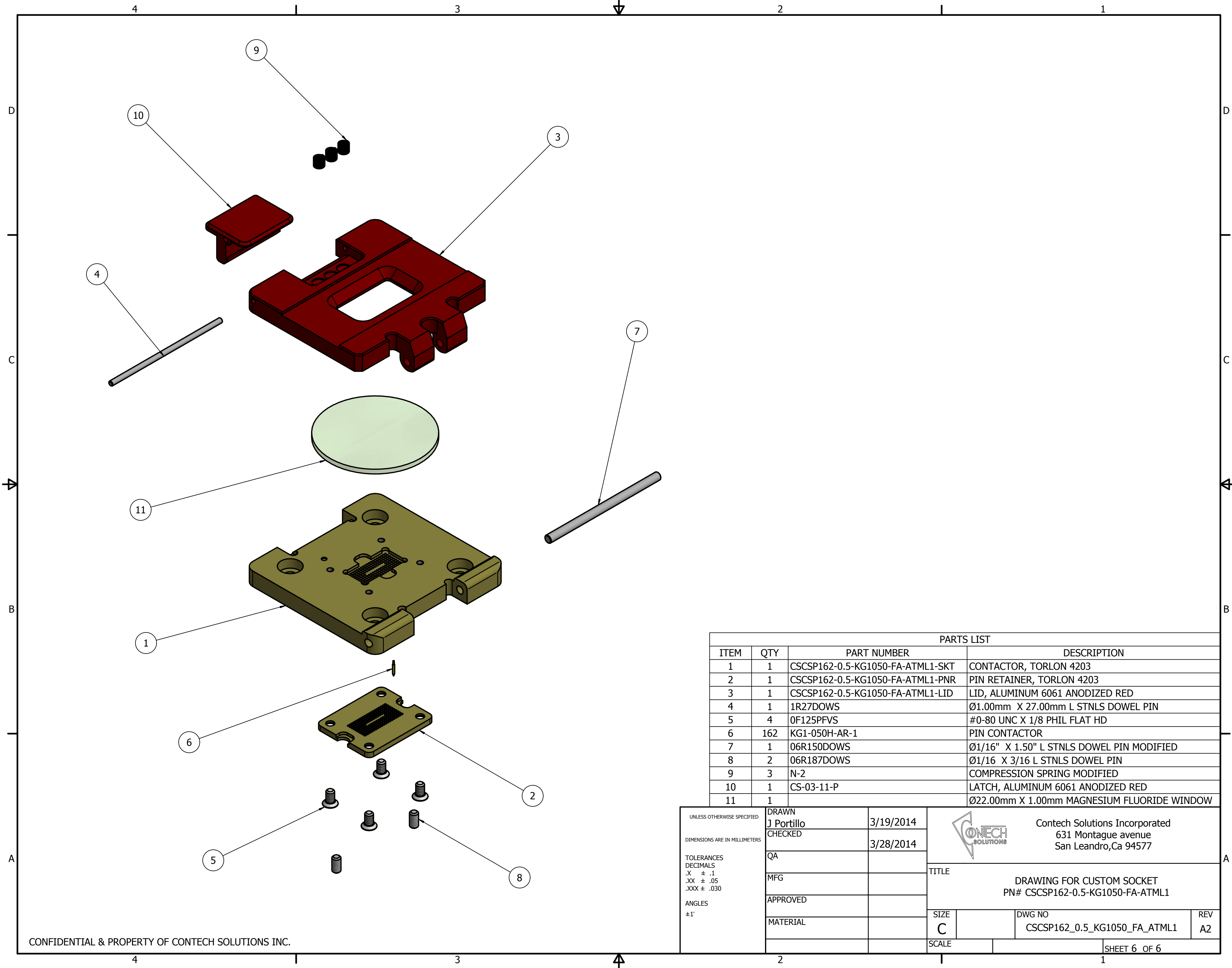
UNLESS OTHERWISE SPECIFIED DIMENSIONS ARE IN MILLIMETERS TOLERANCES DECIMALS .X ± .1 .XX ± .05 .XXX ± .030 ANGLES ±1°	DRAWN J Portillo	3/19/2014	 Contech Solutions Incorporated 631 Montague avenue San Leandro, Ca 94577	
	CHECKED	3/28/2014		
	QA		TITLE	
	MFG		DRAWING FOR CUSTOM SOCKET PN# CSCSP162-0.5-KG1050-FA-ATML1	
APPROVED		SIZE	DWG NO	REV
MATERIAL		C	CSCSP162_0.5_KG1050_FA_ATML1	A2
		SCALE	SHEET 4 OF 6	




PARTS LIST			
ITEM	QTY	PART NUMBER	DESCRIPTION
1	1	CSCSP162-0.5-KG1050-FA-ATML1-SKT	CONTACTOR, TORLON 4203
2	1	CSCSP162-0.5-KG1050-FA-ATML1-PNR	PIN RETAINER, TORLON 4203
3	1	CSCSP162-0.5-KG1050-FA-ATML1-LID	LID, ALUMINUM 6061 ANODIZED RED
4	1	1R27DOWS	Ø1.00mm X 27.00mm L STNLS DOWEL PIN
5	4	0F125PFVS	#0-80 UNC X 1/8 PHIL FLAT HD
6	162	KG1-050H-AR-1	PIN CONTACTOR
7	1	06R150DOWS	Ø1/16" X 1.50" L STNLS DOWEL PIN MODIFIED
8	2	06R187DOWS	Ø1/16 X 3/16 L STNLS DOWEL PIN
9	3	N-2	COMPRESSION SPRING MODIFIED
10	1	CS-03-11-P	LATCH, ALUMINUM 6061 ANODIZED RED
11	1		Ø22.00mm X 1.00mm MAGNESIUM FLUORIDE WINDOW

UNLESS OTHERWISE SPECIFIED DIMENSIONS ARE IN MILLIMETERS TOLERANCES DECIMALS .X ± .1 .XX ± .05 .XXX ± .030 ANGLES ±1°	DRAWN	J Portillo	3/19/2014	 Contech Solutions Incorporated 631 Montague avenue San Leandro, Ca 94577		
	CHECKED		3/28/2014			
	QA			TITLE	DRAWING FOR CUSTOM SOCKET PN# CSCSP162-0.5-KG1050-FA-ATML1	
	MFG			SIZE		C
APPROVED			DWG NO	CSCSP162_0.5_KG1050_FA_ATML1	REV	A2
MATERIAL			SCALE		SHEET 5 OF 6	

CONFIDENTIAL & PROPERTY OF CONTECH SOLUTIONS INC.



PARTS LIST			
ITEM	QTY	PART NUMBER	DESCRIPTION
1	1	CSCSP162-0.5-KG1050-FA-ATML1-SKT	CONTACTOR, TORLON 4203
2	1	CSCSP162-0.5-KG1050-FA-ATML1-PNR	PIN RETAINER, TORLON 4203
3	1	CSCSP162-0.5-KG1050-FA-ATML1-LID	LID, ALUMINUM 6061 ANODIZED RED
4	1	1R27DOWS	Ø1.00mm X 27.00mm L STNLS DOWEL PIN
5	4	0F125PFVS	#0-80 UNC X 1/8 PHIL FLAT HD
6	162	KG1-050H-AR-1	PIN CONTACTOR
7	1	06R150DOWS	Ø1/16" X 1.50" L STNLS DOWEL PIN MODIFIED
8	2	06R187DOWS	Ø1/16 X 3/16 L STNLS DOWEL PIN
9	3	N-2	COMPRESSION SPRING MODIFIED
10	1	CS-03-11-P	LATCH, ALUMINUM 6061 ANODIZED RED
11	1		Ø22.00mm X 1.00mm MAGNESIUM FLUORIDE WINDOW

UNLESS OTHERWISE SPECIFIED DIMENSIONS ARE IN MILLIMETERS TOLERANCES DECIMALS .X ± .1 .XX ± .05 .XXX ± .030 ANGLES ±1'	DRAWN	J Portillo	3/19/2014	 Contech Solutions Incorporated 631 Montague avenue San Leandro, Ca 94577	
	CHECKED		3/28/2014		
	QA			TITLE	DRAWING FOR CUSTOM SOCKET PN# CSCSP162-0.5-KG1050-FA-ATML1
	MFG			SIZE	C
APPROVED			DWG NO	CSCSP162_0.5_KG1050_FA_ATML1	
MATERIAL			REV	A2	
			SCALE		
				SHEET 6 OF 6	